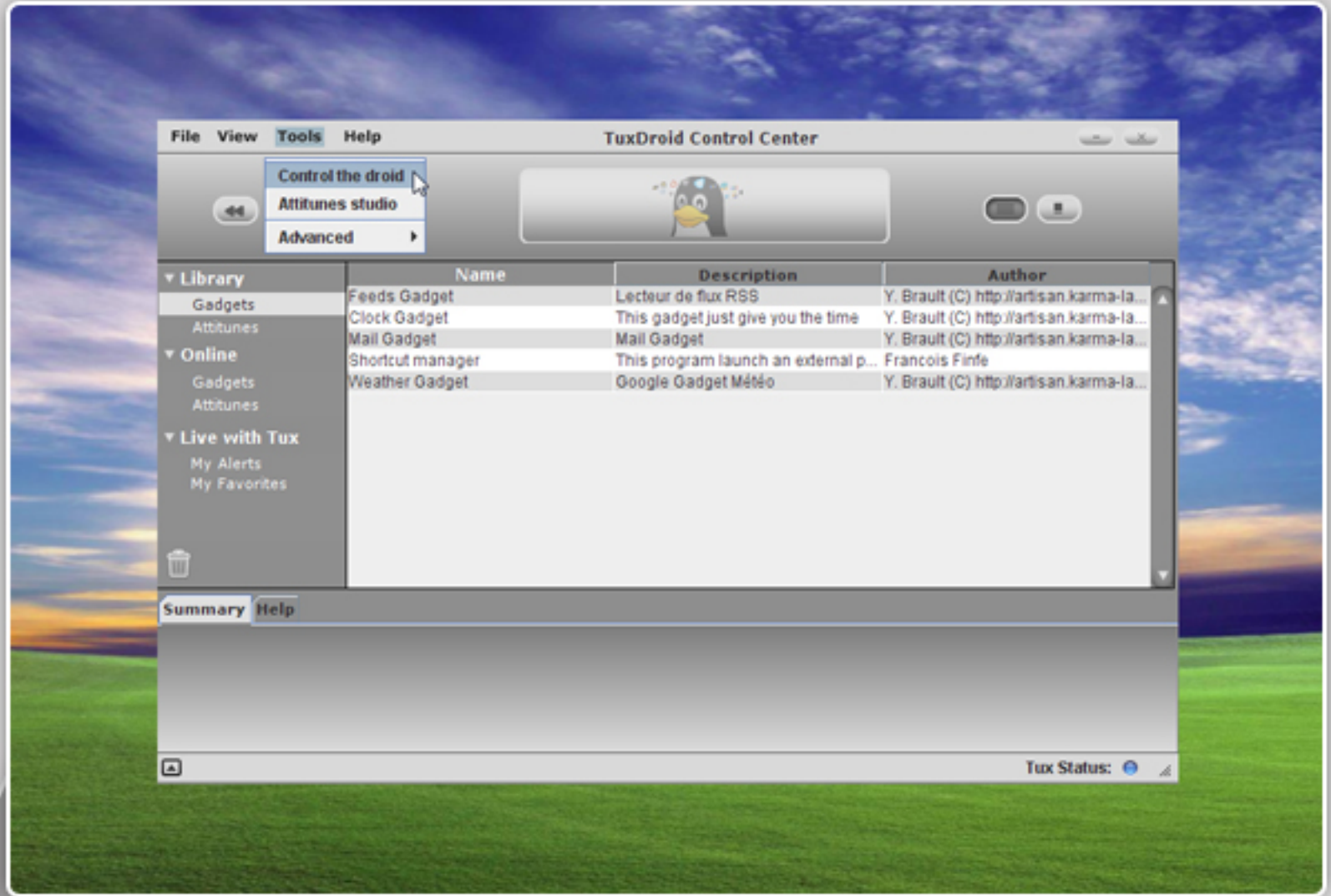




1



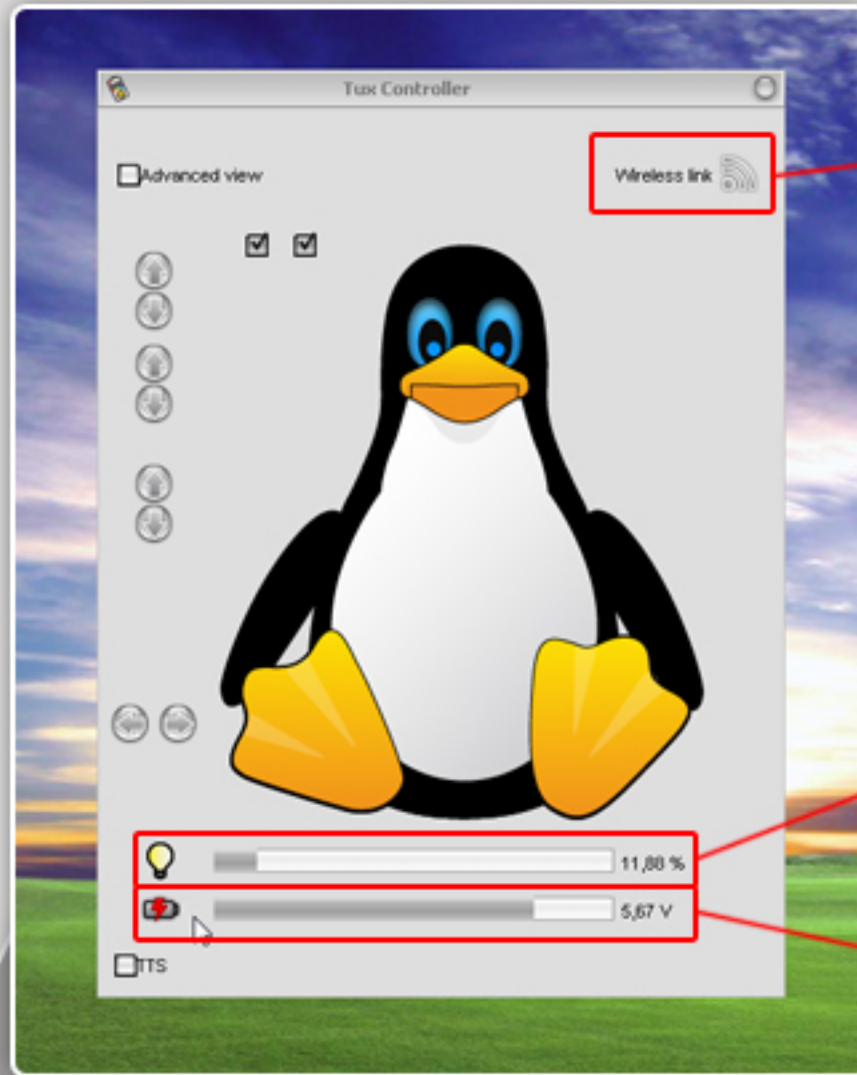
Tux is a wireless robot.

You can control your Tux entirely from your computer.

To do that, go to tools > control the droid.



2

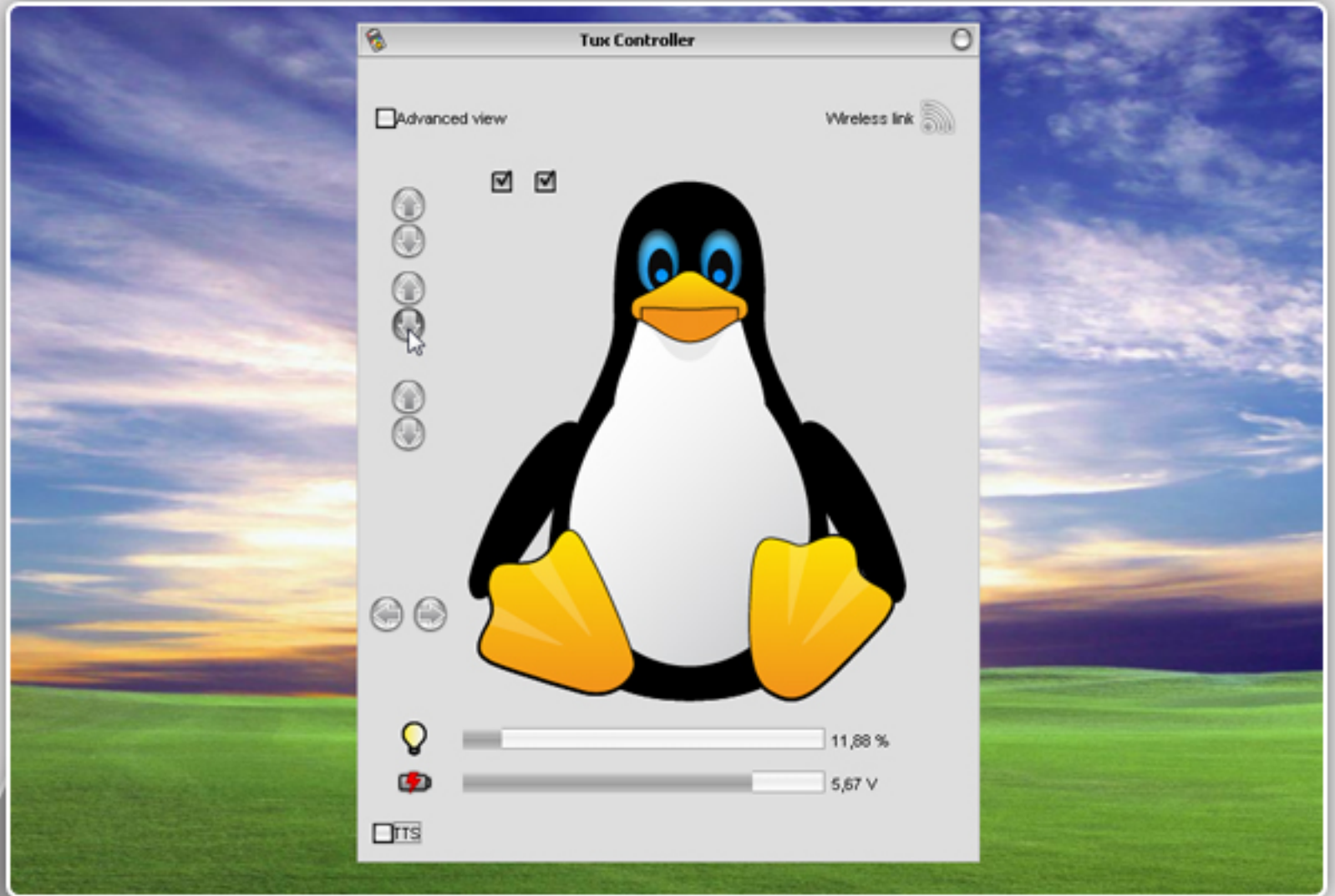


First check

1. Is your Tux connected with the dongle?
Check the icon.
2. Tux is also equipped with a light sensor
Try to cover the eyes of Tux and check the
light level.
3. You can also check the battery level.
The battery level function will only display
the battery information correctly when
removing the power adaptor.



3

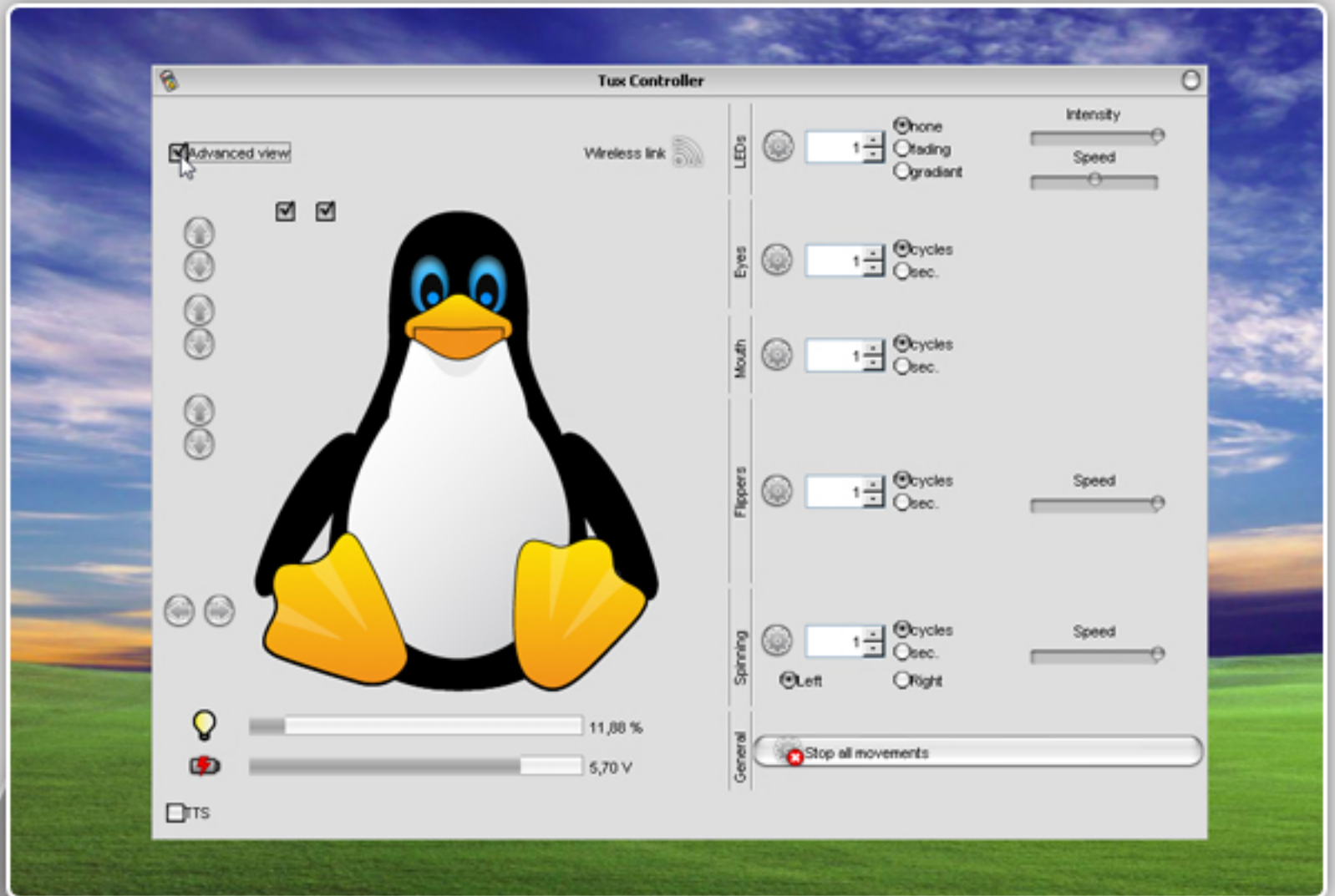


Now let's check out all the movements your Tux can do:

Just click the arrow buttons next to the Tux body part you want to move.



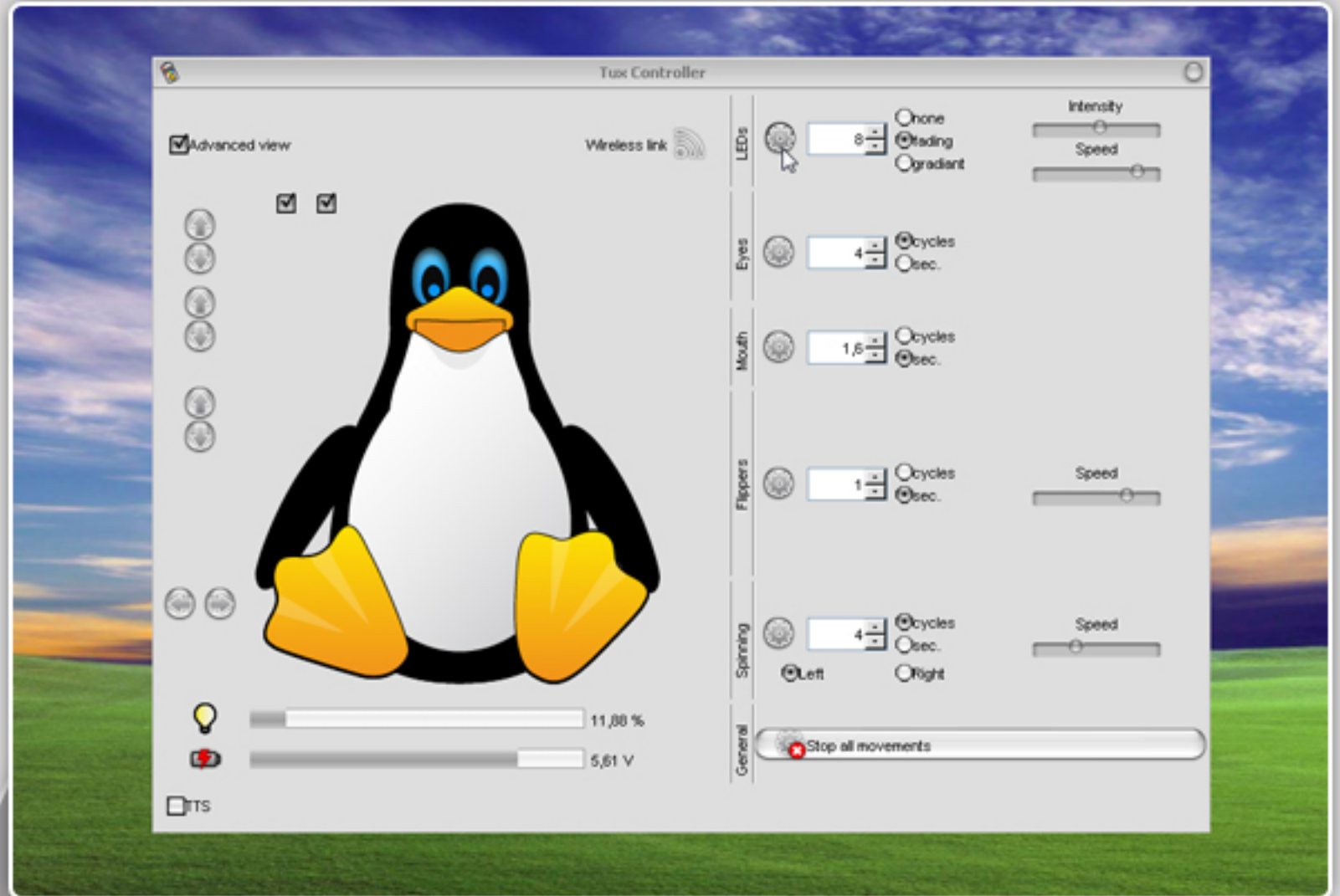
4




Click the Advanced View checkbox to access more advanced movement functions.



5



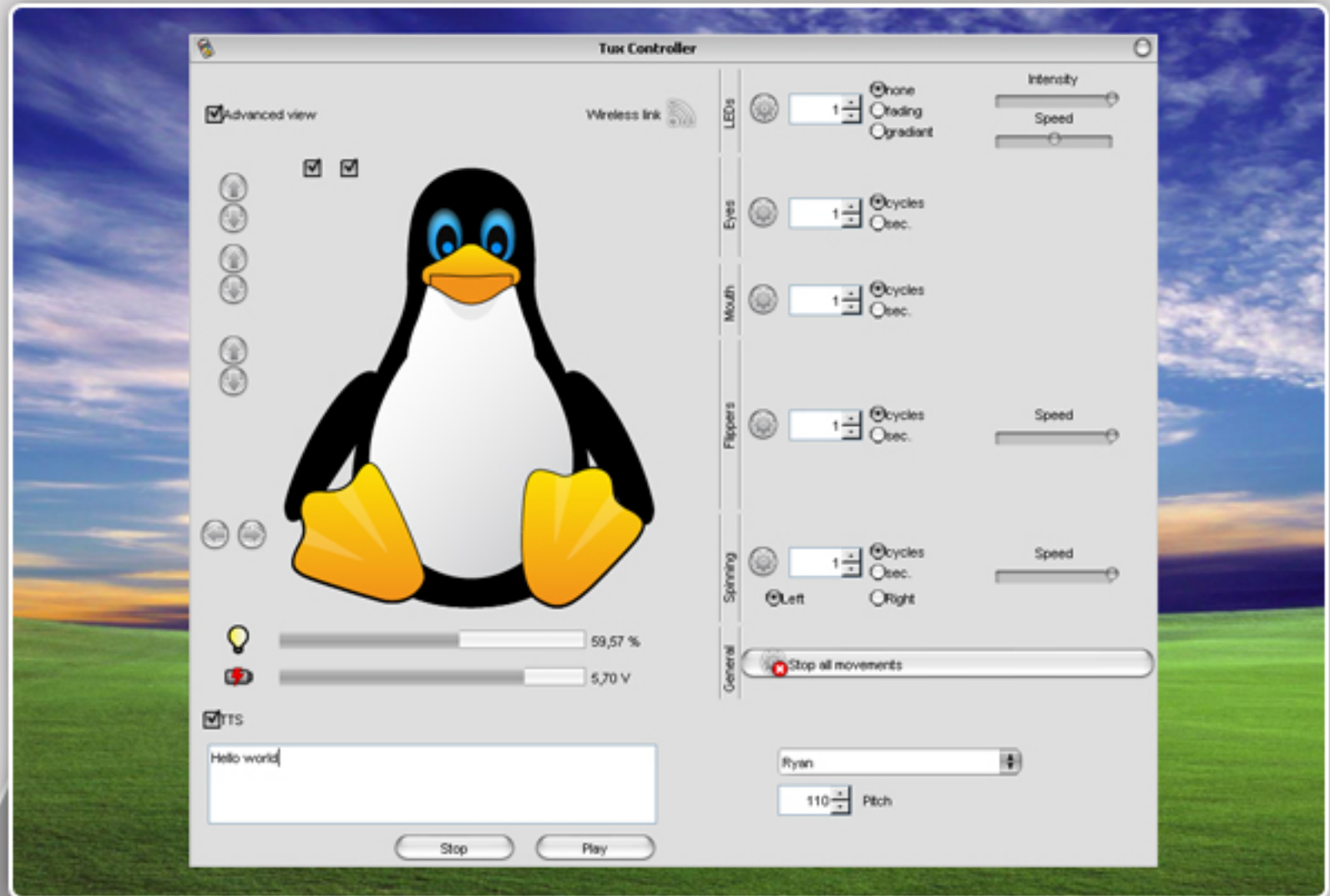
Combine movements:

Change the values and sliders and click the  button to see what it does. You can click several gear icons at the same time.

Please note: the eyes and beak movements cannot be actuated at the same time as they are sharing the same motor.



6



Click the TTS checkbox to access the Speech functions.

Type a sentence replacing Hello world. At the right you can select the voice of your choice and tweak the pitch level. Just try it out and have fun!

